

DATAPATH
COMICS

THE ADVENTURES OF

CAPTAIN CONTRIBUTOR™

APPROVED
FOR ALL AGES

HOSPITAL



IN THIS ISSUE

MY HSA BALANCE
IS GROWING!
HOW AM I GOING
TO USE IT?

AND

DON'T TELL ME
TO BE CALM!
THE BABY IS
ON ITS WAY
AND WE'RE NOT
PREPARED!

WHIRLING WORRIES

LABOR OF LOVE



Health Savings Account (HSA)

HSAs are an employer-sponsored benefit account for people with a qualified high deductible healthcare plan. Participants make pre-tax contributions into their account and use the funds for out-of-pocket eligible medical expenses for themselves and their dependents.

Triple Tax Savings!

Participants enjoy three major tax benefits:

1. Contributions to the HSA are made before taxes, saving on Federal, State, and FICA taxes
2. Withdrawals made for eligible medical expenses are tax free
3. Account earnings (interest on the balance and investment income) are tax free

Additional HSA Benefits include:

- You own the account! If your employment status changes for whatever reason, you keep the account forever and can continue using the funds
- Invest your funds once your account balance reaches \$1,000 and grow your account quickly
- After age 55, you can contribute an additional \$1,000 over the annual limit
- Use your funds as a retirement account – starting at age 65, any withdrawals for non-qualified expenses are taxed as regular income

Eligible Expenses

Contact your Benefits Representative for more details.

© 2023 DataPath, Inc.

2023/2024 Annual Contribution Limits

Participants with individual coverage:

2023: \$3,850
2024: \$4,150

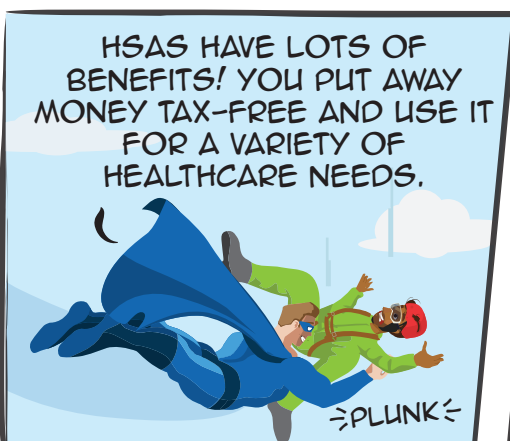
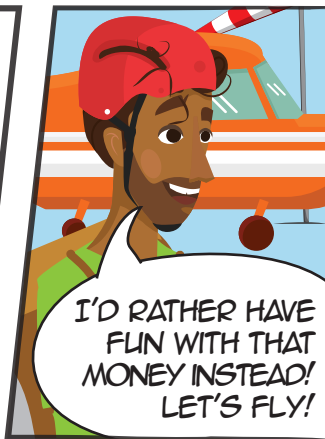
Participants with family coverage:

2023: \$7,750
2024: \$8,300

DataPath
Administrative Services

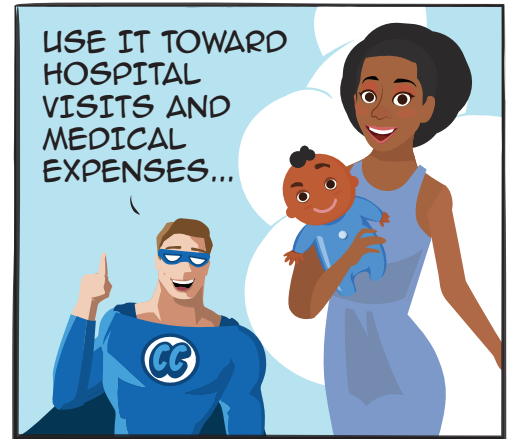
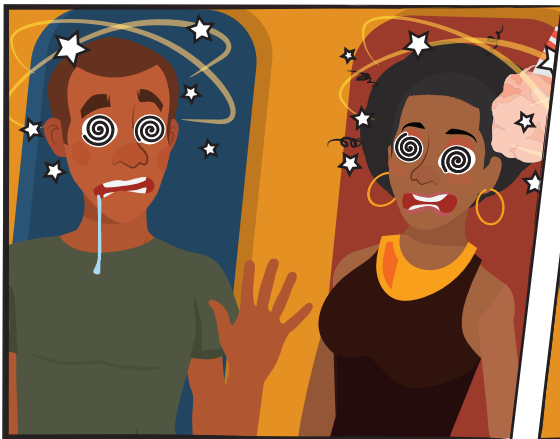
Customer Service
Toll-Free 877-685-0655
benefits@datapathadmin.com
datapathadmin.com
PO Box 55068
Little Rock, AR 72215

CC EPISODE 1: PARACHUTE PREDICAMENT



CC EPISODE 2: WHIRLING HSA WORRIES





HSA Eligible Expenses

The following is a list of eligible expenses. For more detailed information, see IRS Publication 502.

Acupuncture
Alcoholism treatment
Allergy shots and testing
Ambulance (ground or air)
Artificial limbs
Blind services and equipment
Car controls for handicapped*
Chiropractor services
Coinsurance and deductibles
Contact lenses
Crutches, wheelchairs, walkers
Dental treatment
Dentures
Diagnostic tests
Doctor's fees

Drug addiction treatment & facilities
Drugs (prescription)
Eye examinations and eyeglasses
Home health and/or hospice care
Hospital services
Insulin
Laboratory fees
LASIK eye surgery
Medical alert (bracelet, necklace)
Medical monitoring and testing devices*
Nursing services
Obstetrical expenses
Occlusal guards
Operations and surgeries (legal)
Optometrists
Orthodontia
Orthopedic services
Osteopaths

Oxygen/oxygen equipment
Physical exams
Physical therapy
Psychiatric care (psychologists, psychotherapists)
Radial keratotomy
Schools (special, relief, or handicapped)
Sexual dysfunction treatment
Smoking cessation programs
Surgical fees
Television or telephone for the hearing impaired
Therapy treatments*
Transportation (essentially and primarily for medical care; limits apply)
Vaccinations
Vitamins*
Weight loss programs*
X-rays



OTC Medications and Products

The following is a list of eligible expenses. For more detailed information, see IRS Publication 502.

Acne medications & treatments
Allergy & sinus, cold, flu & cough remedies
Antacids & acid controllers
Antibiotic & antiseptic sprays, creams & ointments
Anti-diarrheals
Anti-fungals
Anti-gas & stomach remedies
Anti-itch & insect bite remedies
Anti-parasitics
Digestive aids
Baby care (diaper rash ointments, teething gel, rehydration fluids, etc.)
Bandages and bandaids
Breast pumps for nursing mothers
Braces & supports
Contact lens solution
Contraceptives (condoms, gels, foams, suppositories, etc.)
CPAP equipment & supplies

Diabetic testing supplies/equipment
Durable medical equipment (power chairs, walkers, wheelchairs, etc.)
Eczema & psoriasis remedies
Eye drops, ear drops, nasal sprays
First aid kits
Hemorrhoidal preparations
Home diagnostic (pregnancy tests, ovulation kits, thermometers, blood pressure monitors, etc.)
Hydrogen peroxide, rubbing alcohol
Laxatives
Medicated bandaids & dressings
Menstrual care products

Motion sickness remedies
Nicotine patches and medications, smoking cessation aids
OTC varieties of Insulin
Personal protection equipment (PPE)
Pain relievers (aspirin, ibuprofen, acetaminophen, naproxen, etc.)
Reading glasses
Sleep aids & sedatives
Wart removal remedies, corn patches



WORDFIND

INVESTING

ROLLOVER

REIMBURSEMENT

SAVINGS

DEBIT CARD

PORTABLE

INJURY

ILLNESS

EYE CARE

DENTAL

H	I	P	Z	X	C	O	I	L	M	J	L	F
I	N	J	U	R	Y	H	B	D	A	R	S	K
L	V	A	L	I	V	E	J	E	N	O	D	O
P	E	R	U	D	Q	B	I	B	W	L	E	R
G	S	E	R	F	E	U	K	I	P	L	O	E
Z	T	J	A	R	V	N	B	T	S	O	Y	I
I	I	C	S	K	E	P	T	C	I	V	L	M
P	N	L	U	E	Y	E	C	A	R	E	X	B
J	G	O	L	Z	A	P	E	R	L	R	F	U
G	T	Y	I	N	W	H	O	D	R	E	N	R
O	C	A	P	E	E	K	B	P	O	W	I	S
S	A	V	I	N	G	S	Q	Y	L	D	V	E
A	W	P	L	N	H	B	S	R	F	N	O	M
T	E	G	B	M	P	O	R	T	A	B	L	E
H	K	L	B	C	X	O	R	I	L	C	D	N
E	I	E	I	O	L	M	A	S	K	V	M	T

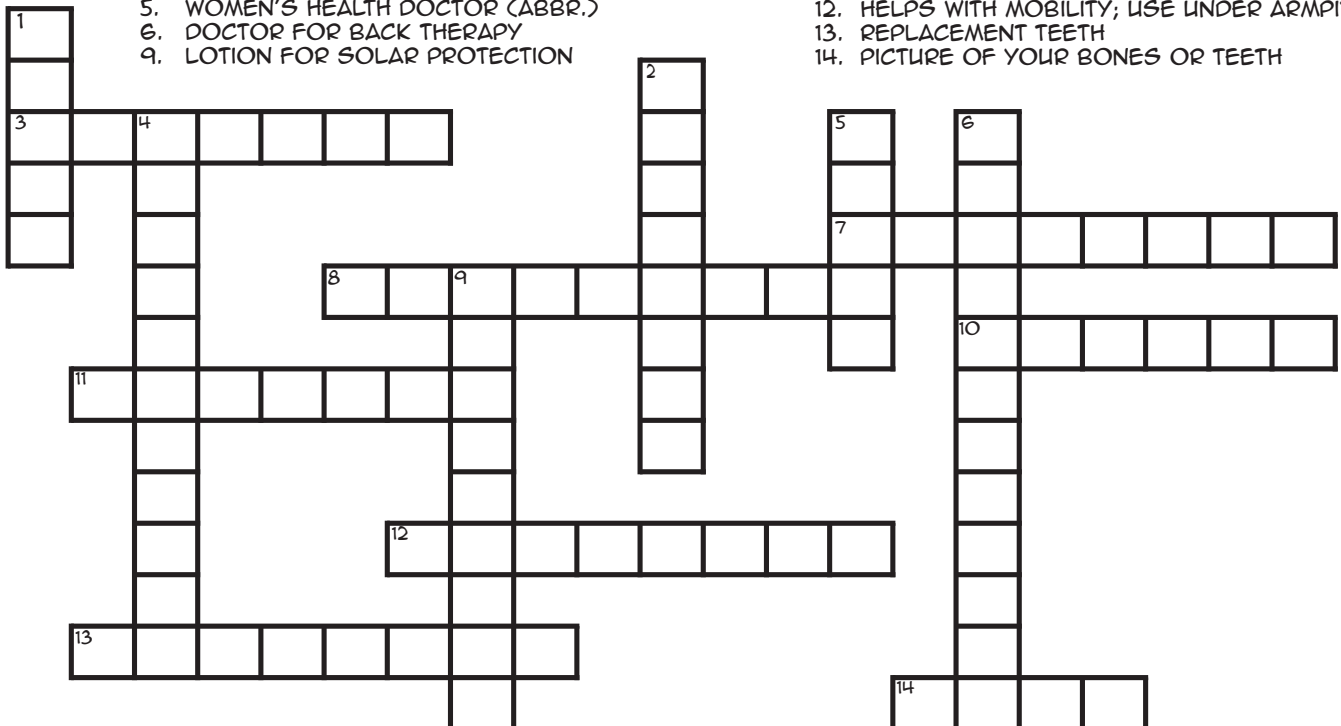
CROSSWORD

DOWN

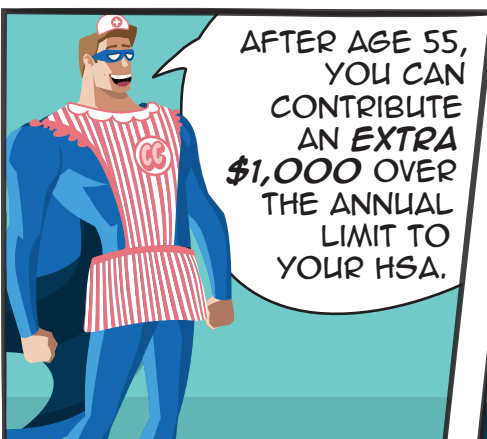
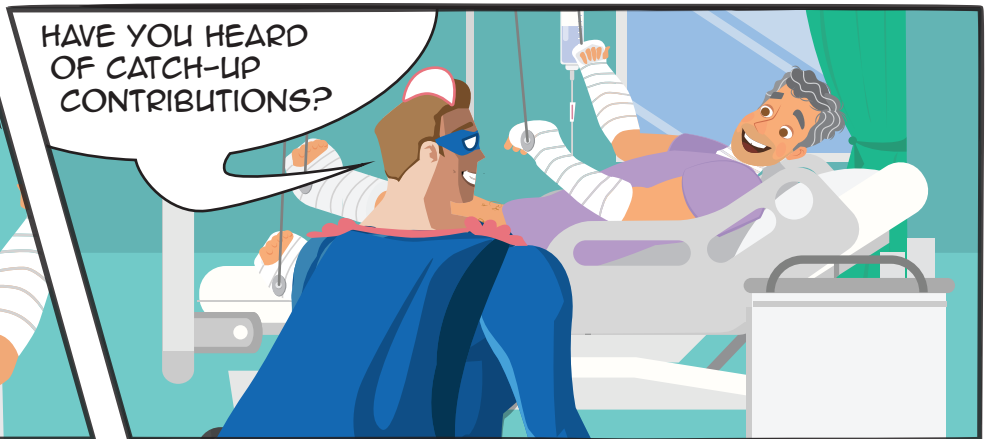
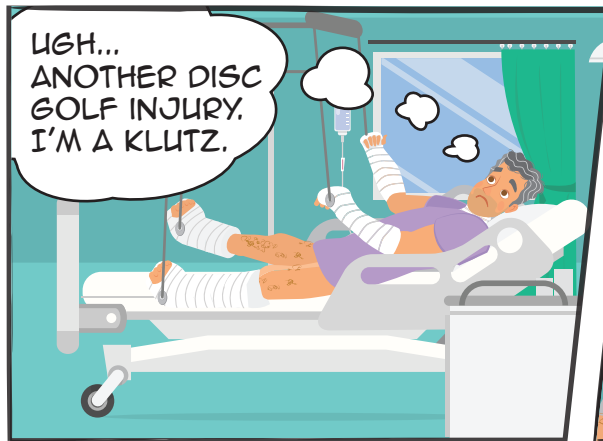
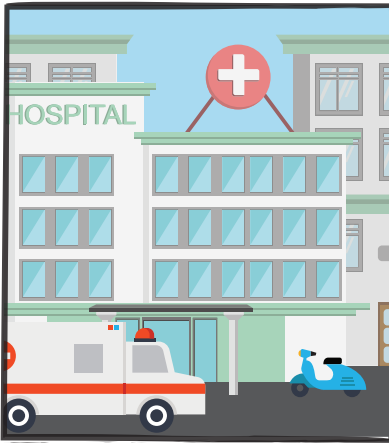
1. CONTINUING HEALTH COVERAGE
2. WOUND CARE SUPPLIES
4. ANCIENT CHINESE MEDICINE
5. WOMEN'S HEALTH DOCTOR (ABBR.)
6. DOCTOR FOR BACK THERAPY
9. LOTION FOR SOLAR PROTECTION

ACROSS

3. READING ASSISTANCE FOR THE BLIND
7. SERVICE ANIMAL
8. ELECTIVE PROCEDURE FOR MALE STERILITY
10. BREATH OF LIFE
11. MEDICINE FOR DIABETICS
12. HELPS WITH MOBILITY; USE UNDER ARMPIT
13. REPLACEMENT TEETH
14. PICTURE OF YOUR BONES OR TEETH



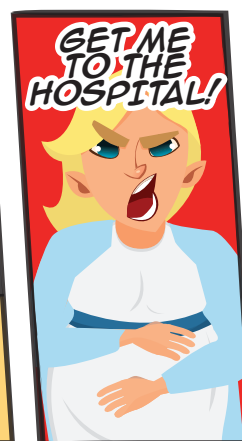
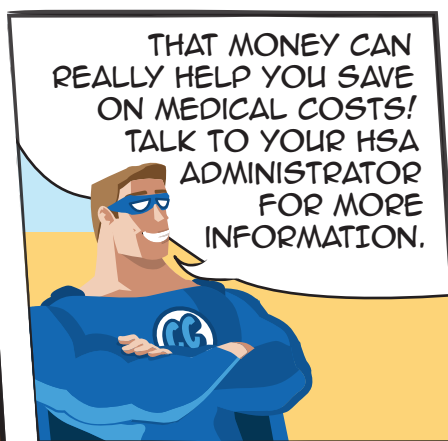
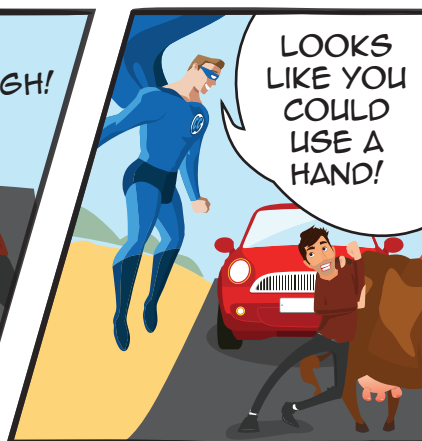
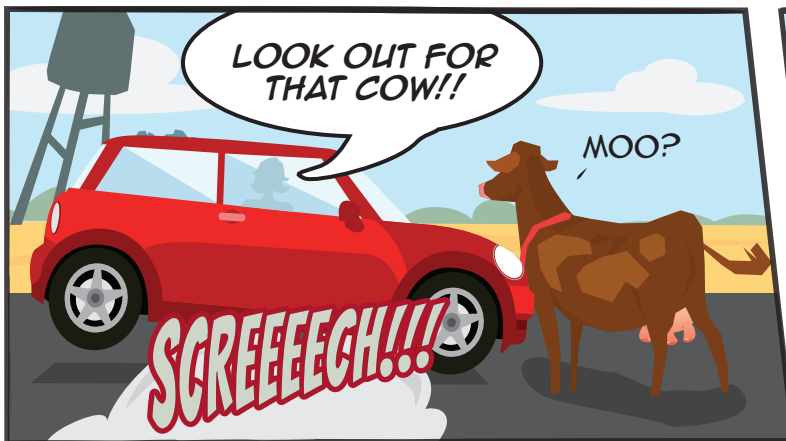
CC EPISODE 3: CAPTAIN'S ORDERS



FIND THE SHAPES



CC EPISODE 4: A LABOR OF LOVE



For more Adventures of **Captain Contributor**, and how you can make the most of your hard earned dollars, ask your third party administrator about **DCAP, FSAs, and Transit accounts**.

Visit **captaincontributor.com** for more adventures, or follow him on social media:



@captcontributor



[captaincontributor](https://www.instagram.com/captaincontributor)



[facebook.com/captaincontributor](https://www.facebook.com/captaincontributor)

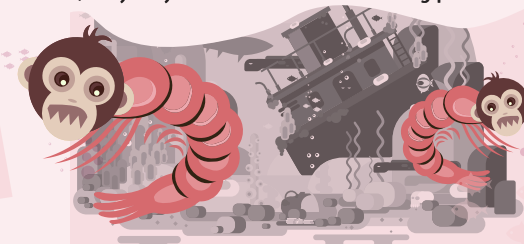
SEA-PRIMATES

It's the real live primate you grow yourself

It's ABSOLUTELY AMAZING! Just add water to the tank, toss in the Sea-Primate eggs, and watch as baby primates hatch before your eyes! They are CUTE, they GROW, they PLAY, but be careful, they may BITE. The least entertaining pet ever!

INCLUDES:

Every Sea-Primate kit includes a leaky jar, feeding spoon, Sea-Primate eggs, Sea-Primate food, bandages, and a manual for training your pet primates.



YOU'LL BE AMAZED!

X-RAY SPECS

Put them on and reveal what's hidden!
See through clothes, skin, walls, and MORE!

HYPNOSIS

Learn the art of Hypnosis!

You'll be amazed how easy it is to hypnotize anyone into accepting your suggestions. With the snap of a finger, astonish your friends with stunts of hypnotic wonder at YOUR EVERY command!



PROJECTING DECODER RING

Decode your own secret messages as they are projected onto any surface with this amazing **Projector Decoder Ring!** Simply point and shoot and you'll be decrypting codes in no time!



TRIVIA

What is tax-free for HSAs?

- A. Contributions
- B. Withdrawals for eligible expenses
- C. Interest/investment earnings
- D. All of the above

Answer: D. All of the above.

GIANT ANT FARM



This wall-sized GIANT ANT FARM will be the toast of your town! Watch the little giants dig their tunnels, it's miles of fun!

THANKS FOR READING!

This comic book is provided by your third party administrator in conjunction with DataPath, Inc. It may not be reproduced for any reason without express written consent.

DataPath

© Copyright 2023
DataPath, Inc. | dpath.com
v112723



Order your very own carnivorous plant! It's a natural deterrent to pests, and a great conversation piece. **You'll be entertained for several seconds!**

None of this is actually for sale. Surely you realize it's simply for entertainment purposes.

DataPath



Administrative Services

Customer Service

Toll-Free 877-685-0655

benefits@datapathadmin.com

datapathadmin.com

PO Box 55068

Little Rock, AR 72215