

DATAPATH
COMICS



APPROVED
FOR ALL AGES

SPECIAL FSA ISSUE

THE ADVENTURES OF

CAPTAIN CONTRIBUTOR™



IN THIS ISSUE



THE CLOCK IS
TICKING ON THIS
PRESCRIPTION
REFILL!

PRESCRIPTION PROBLEMS

AND



MY CANDY
CRAVING IS
CAUSING
CAVITIES!

DENTAL DILEMMA



Flexible Spending Account (FSA)

A Flexible Spending Account allows employees to set aside money from each paycheck, before payroll taxes are calculated, to help pay for eligible medical expenses for themselves and their dependents.



FSA Contribution Limits

Per year, participants may elect to set aside a maximum of **\$3,200**

Tax Savings

The average FSA participant saves between 30-40% on the amount set aside pre-tax. (including Federal, State, and Local income taxes, and Social Security/Medicare deductions)

FSA Plan Types

FSA rules vary by plan. Your employer may choose one of the following:

- **Use it or Lose it** – All FSA funds must be spent by the end of the plan year or they are lost
- **\$640 Carryover** – Any unused funds, up to a maximum of \$640, can be carried over from one plan year to the next
- **Grace Period** – Participants get an extra 2½ months after the end of the plan year to use any leftover funds

Uniform Coverage Rule

FSA participants can access the full amount of their annual contribution from the first day of the plan year. For example, if you elect \$1,300, and soon after the plan year begins you incur a \$1,300 medical bill, you can use all of your elected FSA funds to cover the expense, even though you haven't paid in all of the contributions yet. Throughout the rest of the plan year, deductions will still be taken at the same rate from each paycheck. However, your available FSA balance will be zero once all the funds are spent.

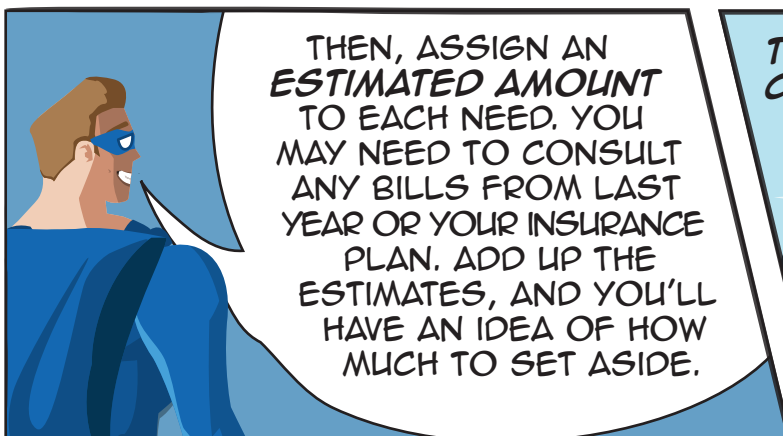
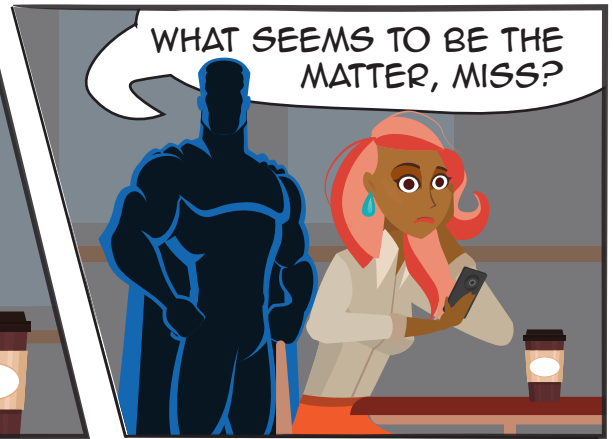
Eligible Expenses

See pages 6-7 for a list of qualified medical expenses. Contact your Benefits Representative for more details.

DataPath 
Administrative Services

Customer Service
Toll-Free 877-685-0655
benefits@datapathadmin.com
datapathadmin.com
PO Box 55068
Little Rock, AR 72215

CC EPISODE 1: SET-ASIDE SELFIES



WORDFIND

CIRCLE THE FOLLOWING:

BRACES

FAMILY

HEARING AIDS

HOME CARE

INSULIN

LAB FEES

MEDICARE D

ORGAN (TRANSPLANT)

USE IT OR LOSE IT

WHEELCHAIR

P	O	W	B	A	M	B	O	O	M	Z	A	P
A	R	H	B	N	E	L	U	G	E	Y	U	M
A	M	E	D	I	C	A	R	E	D	Q	H	J
N	Y	E	O	L	L	B	D	V	K	C	O	L
F	E	L	I	T	B	F	A	M	I	L	Y	O
O	A	C	R	J	A	E	C	Z	B	E	H	E
R	H	H	U	A	F	E	O	L	P	W	E	T
G	Z	A	I	R	Y	S	U	K	H	B	A	E
A	B	I	N	S	U	L	I	N	B	V	R	Y
N	T	R	M	B	G	A	N	Y	R	H	I	Q
M	K	X	O	A	W	E	S	O	A	V	N	W
Y	I	P	N	O	Q	L	U	W	C	B	G	E
E	R	U	H	E	M	K	G	M	E	M	A	R
U	S	E	I	T	O	R	L	O	S	E	I	T
R	A	E	J	A	K	F	X	C	A	K	D	Y
H	O	M	E	C	A	R	E	S	P	O	S	E

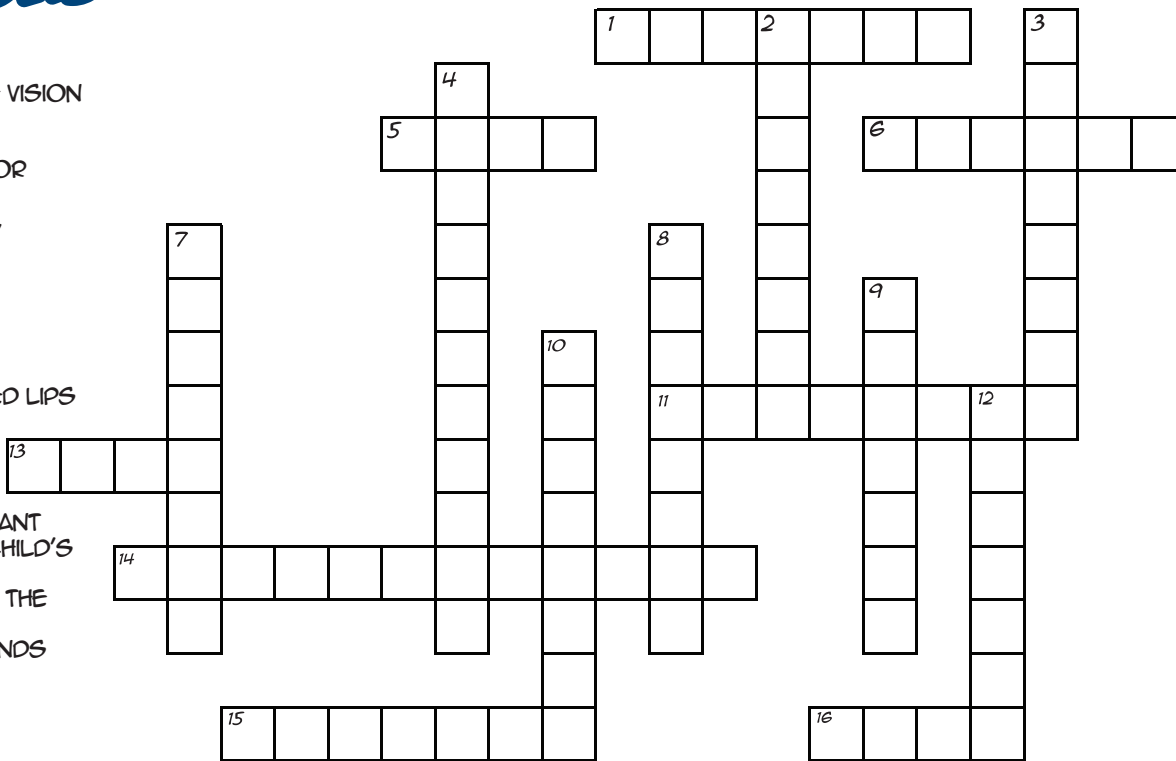
CROSSWORD

ACROSS

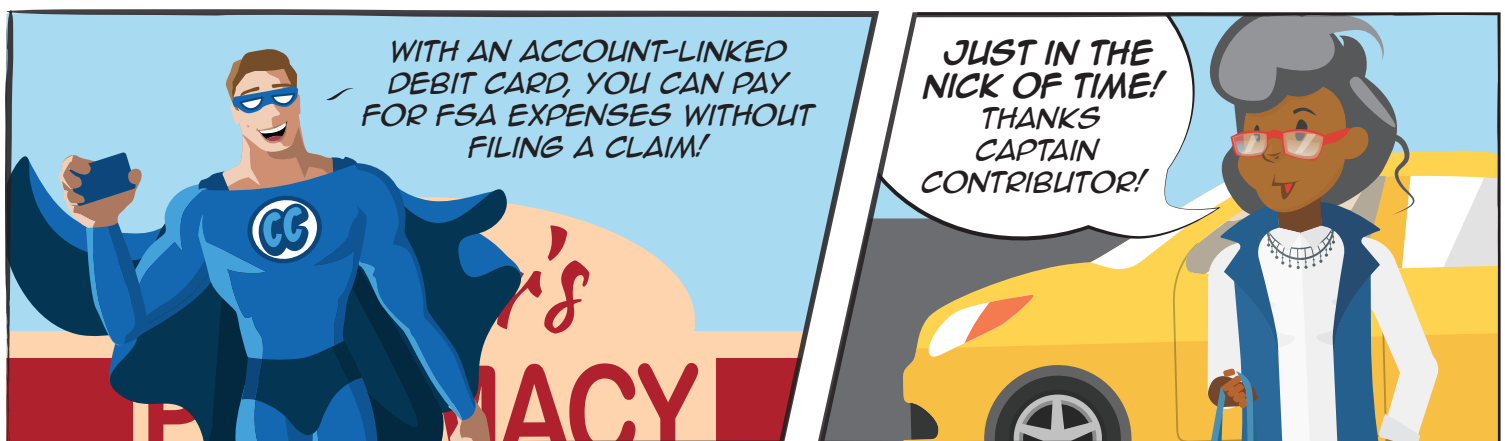
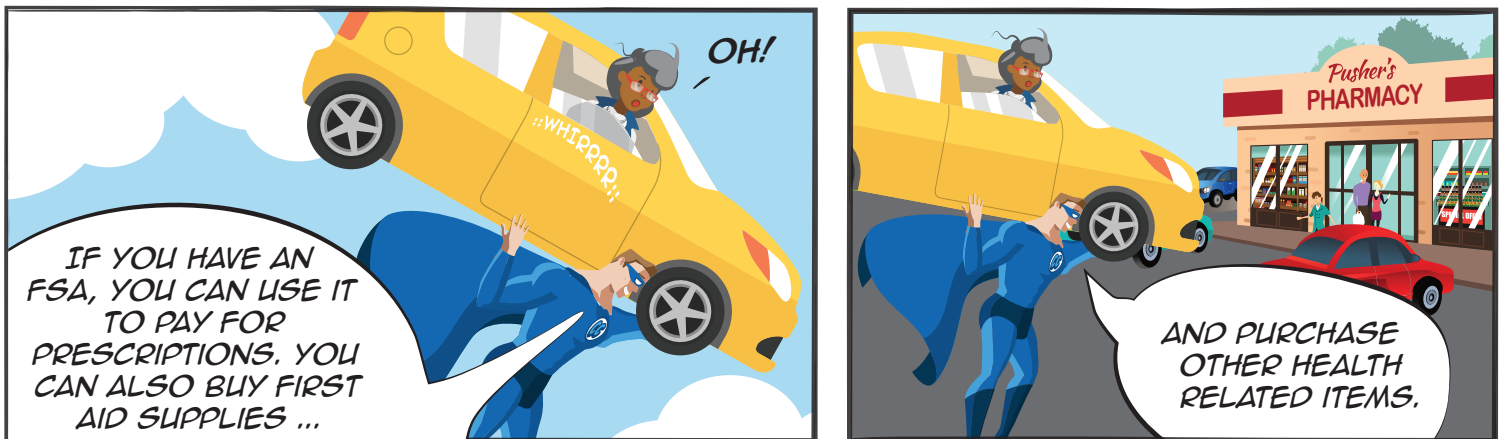
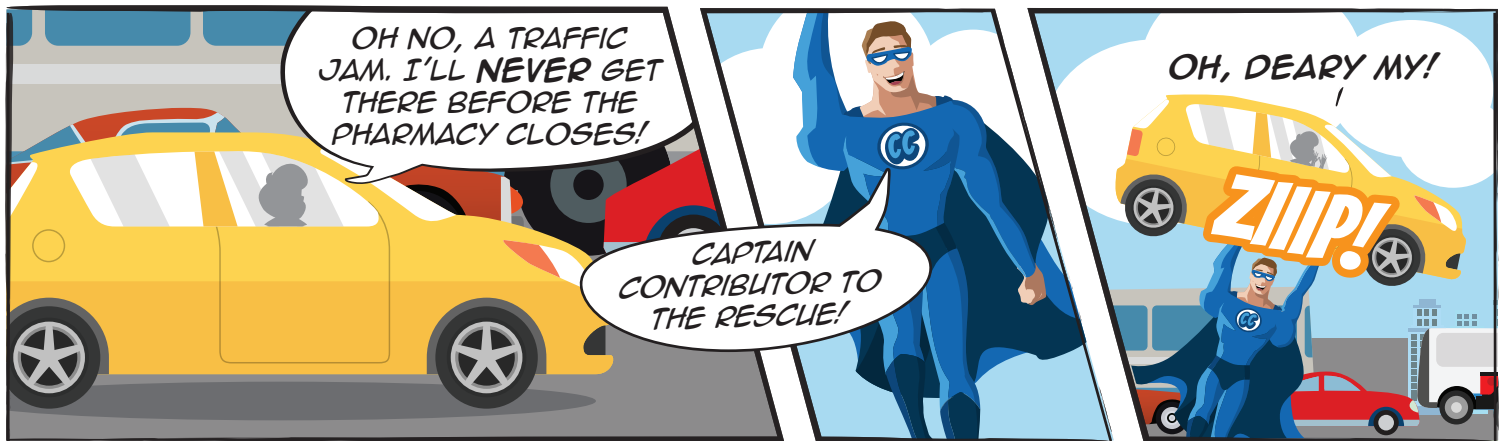
1. WORN TO IMPROVE VISION
5. SKELETAL PICTURE
6. WALKING AID
11. A REPLACEMENT FOR PEARLY WHITES
13. A SKIN AFFLICTION, ESPECIALLY FOR TEENAGERS
14. USED TO PREVENT PREGNANCY
15. USED TO TREAT HEARTBURN
16. PREVENTS CHAPPED LIPS

DOWN

2. LIQUID TO CLEAN CONTACT LENSES
3. TAKEN BY A PREGNANT WOMAN FOR THE CHILD'S DEVELOPMENT
4. 2.5 MONTHS AFTER THE YEAR ENDS WHEN REMAINING FSA FUNDS CAN BE USED
7. A PERSON WHO HAS DIABETES
8. A BLIND PERSON'S HELPER
9. A VACCINE USUALLY GIVEN IN FALL OR WINTER
10. TYPE OF SUPPLY KIT FOR EMERGENCIES
12. A TEST FOR YOUR PEEPERS



CC EPISODE 2: SENIOR PRESCRIPTION PROBLEMS



FSA Eligible Expenses



The following is a list of eligible expenses. For more detailed information, see IRS Publication 502.

Acupuncture	Hospital services	Psychiatric care (psychologists, psychotherapists)
Alcoholism treatment	Insulin	Radial keratotomy
Allergy shots and testing	Laboratory fees	Schools (special, relief, or handicapped)
Ambulance (ground or air)	LASIK eye surgery	Sexual dysfunction treatment
Artificial limbs	Medical alert (bracelet, necklace)	Smoking cessation programs
Blind services and equipment	Medical monitoring and testing devices*	Surgical fees
Car controls for handicapped*	Nursing services	Television or telephone for the hearing impaired
Chiropractor services	Obstetrical expenses	Therapy treatments*
Coinurance and deductibles	Occlusal guards	Transportation (essentially and primarily for medical care; limits apply)
Contact lenses	Operations and surgeries (legal)	Vaccinations
Crutches, wheelchairs, walkers	Optometrists	Vitamins*
Dental treatment	Orthodontia	Weight loss programs*
Dentures	Orthopedic services	X-rays
Diagnostic tests	Osteopaths	
Doctor's fees	Oxygen/oxygen equipment	
Drug addiction treatment & facilities	Physical exams	
Drugs (prescription)	Physical therapy	
Eye examinations and eyeglasses		
Home health and/or hospice care		

OTC Medications and Products



Acne medications & treatments
Allergy & sinus, cold, flu & cough remedies
Antacids & acid controllers
Antibiotic & antiseptic sprays, creams & ointments
Anti-diarrheals
Anti-fungals
Anti-gas & stomach remedies
Anti-itch & insect bite remedies
Anti-parasitics
Digestive aids
Baby care (diaper rash ointments, teething gel, rehydration fluids, etc.)
Bandages and bandaids
Breast pumps for nursing mothers
Braces & supports

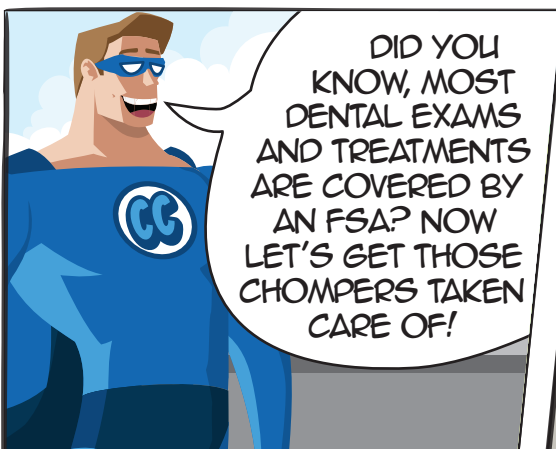
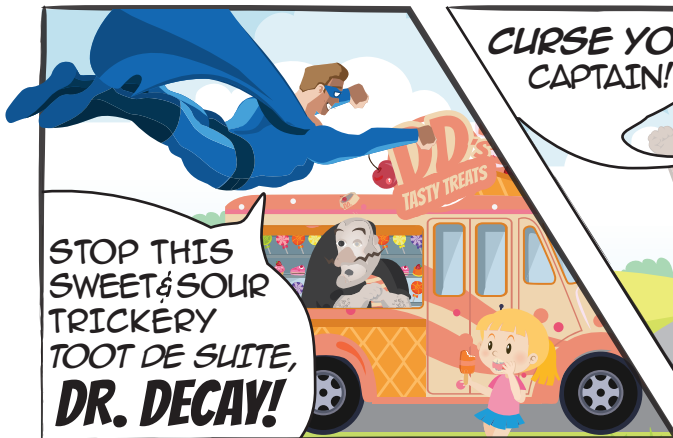
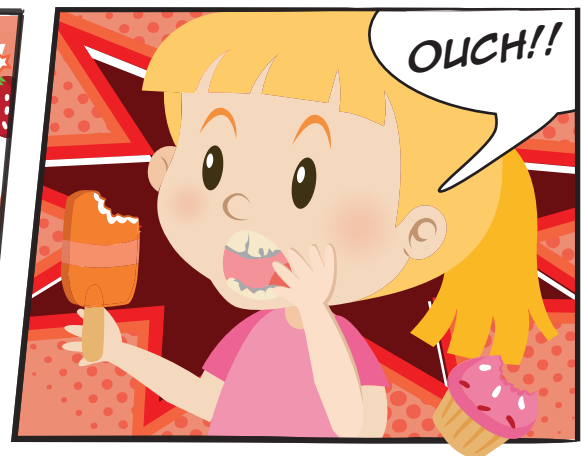
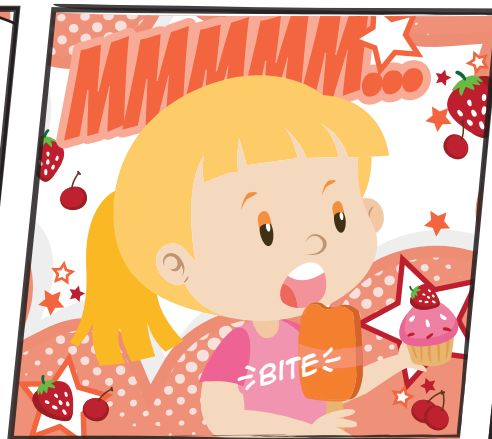
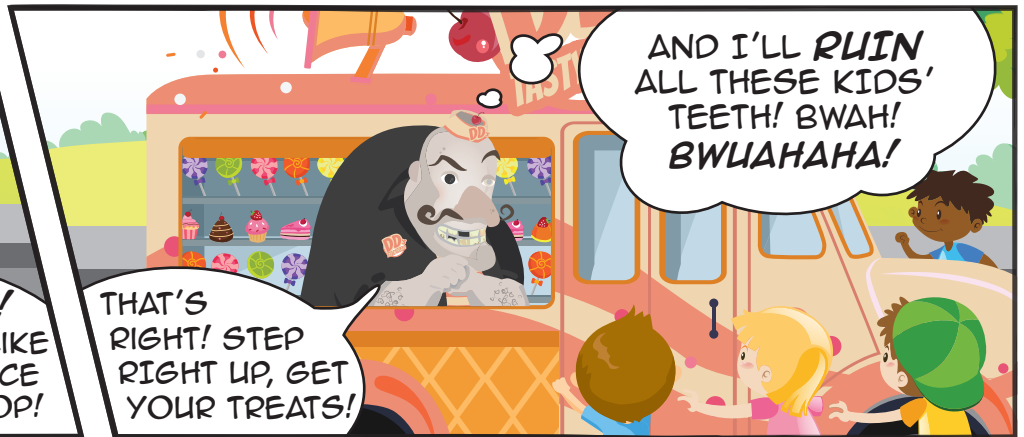
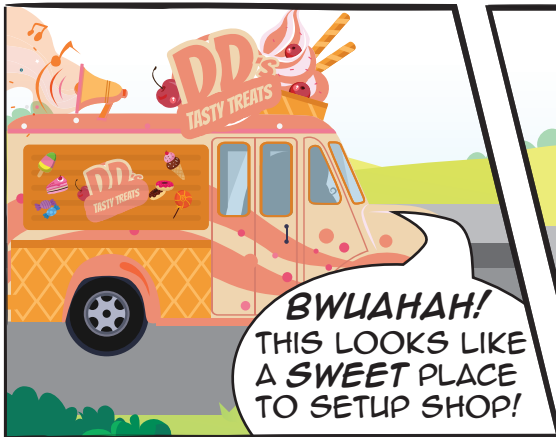
Contact lens solution
Contraceptives (condoms, gels, foams, suppositories, etc.)
CPAP equipment & supplies
Diabetic testing supplies/equipment
Durable medical equipment (power chairs, walkers, wheelchairs, etc.)
Eczema & psoriasis remedies
Eye drops, ear drops, nasal sprays
First aid kits
Hemorrhoidal preparations
Home diagnostic (pregnancy tests, ovulation kits, thermometers, blood pressure monitors, etc.)

Hydrogen peroxide, rubbing alcohol
Laxatives
Medicated bandaids & dressings
Menstrual care products
Motion sickness remedies
Nicotine patches and medications, smoking cessation aids
OTC varieties of Insulin
Pain relievers (aspirin, ibuprofen, acetaminophen, naproxen, etc.)
Personal Protective Equipment (PPE) for COVID-19
Reading glasses
Sleep aids & sedatives
Wart removal remedies, corn patches

**COLORING
PAGE**



CC EPISODE 3: DENTAL DILEMMA

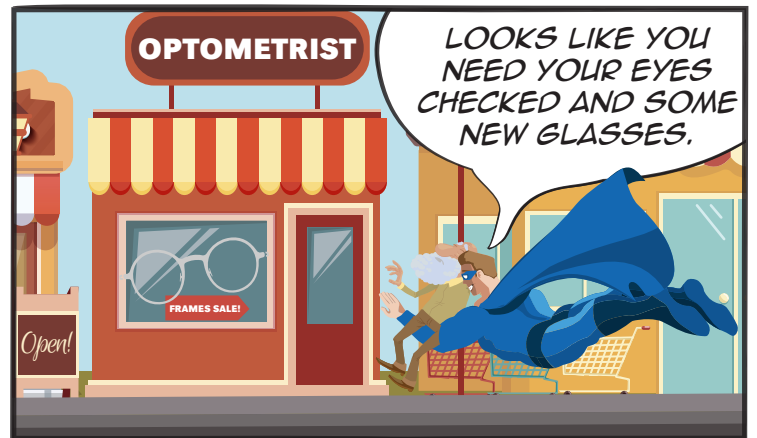
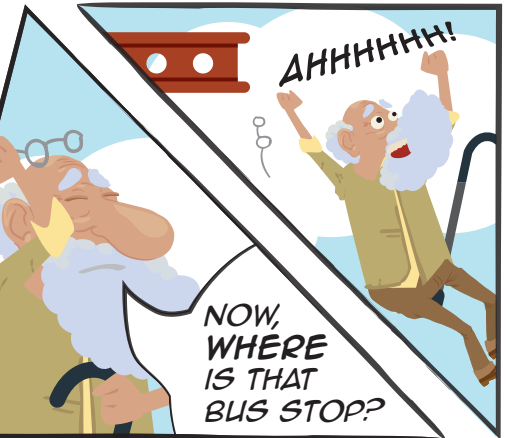
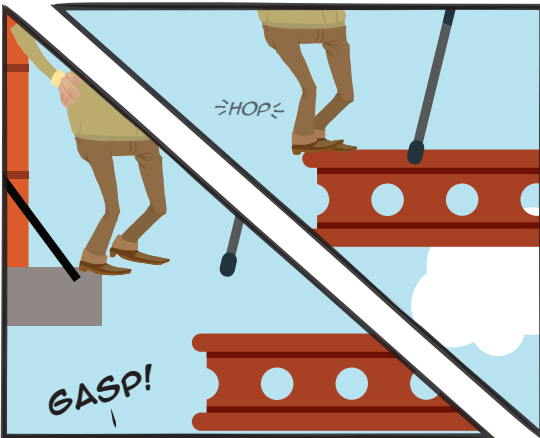


FIND THE DIFFERENCES

FIND 10 DIFFERENCES






CC EPISODE 4: SHORT-SIGHTED SITUATION



For more Adventures of **Captain Contributor**, and how you can make the most of your hard earned dollars, ask your third party administrator about **DCAP, FSAs, and Transit accounts**.

Visit **captaincontributor.com** for more adventures, or follow him on social media:



 @captcontributor
 captaincontributor
 facebook.com/captaincontributor

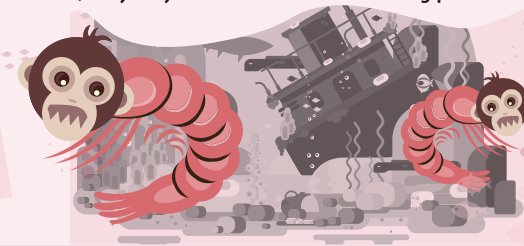
SEA-PRIMATES

It's the real live primate you grow yourself

It's ABSOLUTELY AMAZING! Just add water to the tank, toss in the Sea-Primate eggs, and watch as baby primates hatch before your eyes! They are CUTE, they GROW, they PLAY, but be careful, they may BITE. The least entertaining pet ever!

INCLUDES:

Every Sea-Primate kit includes a leaky jar, feeding spoon, Sea-Primate eggs, Sea-Primate food, bandages, and a manual for training your pet primates.



YOU'LL BE AMAZED!

X-RAY SPECS

Put them on and reveal what's hidden!
See through clothes, skin, walls, and MORE!



HYPNOSIS

Learn the art of Hypnosis!

You'll be amazed how easy it is to hypnotize anyone into accepting your suggestions. With the snap of a finger, astonish your friends with stunts of hypnotic wonder at YOUR EVERY command!



PROJECTING DECODER RING

Decode your own secret messages as they are projected onto any surface with this amazing **Projector Decoder Ring!** Simply point and shoot and you'll be decrypting codes in no time!



TRIVIA

Which of these is **NOT** an FSA eligible expense?

- A. Ambulance
- B. Teeth whitening
- C. Pregnancy test kit
- D. Wheelchair

Answer: B. Teeth whitening

GIANT ANT FARM



This wall-sized GIANT ANT FARM will be the toast of your town! Watch the little giants dig their tunnels, it's miles of fun!

THANKS FOR READING!

This comic book is provided by your third party administrator in conjunction with DataPath, Inc. It may not be reproduced for any reason without express written consent.

DataPath 

© Copyright 2023
DataPath, Inc. | dpath.com
v111623



Order your very own carnivorous plant! It's a natural deterrent to pests, and a great conversation piece. **You'll be entertained for several seconds!**

None of this is actually for sale. Surely you realize it's simply for entertainment purposes.

DataPath 

Administrative Services

Customer Service

Toll-Free 877-685-0655
benefits@datapathadmin.com
datapathadmin.com
PO Box 55068
Little Rock, AR 72215