

DATAPATH
COMICS



APPROVED
FOR ALL AGES

THE ADVENTURES OF

CAPTAIN CONTRIBUTOR™

BENEFITS DEBIT
CARDS ISSUE



IN THIS ISSUE

HELP! I'M UP
TO MY EYEBALLS
IN RECEIPTS!

BWAHAHAH!
JUST SEND
ME A CHECK!

AND

CLAIMS PRISON

EVIL VILLAIN!

BENEFITS DEBIT CARDS

An account-linked debit card provides participants with instant access to their funds.

Advantages of a Benefits Debit Card

- Gives you secure, instant access to funds
- Decreases claims filing and having to wait for reimbursement
- May be used everywhere major credit cards are accepted (pharmacies, doctors offices, etc.)
- Helps reduce fraud with purchase restrictions for only approved items, services, and locations

Purchase Substantiation

- The IRS requires that debit card purchases be "substantiated," or verified to be an eligible expense
- Many card purchases can be substantiated automatically, depending on your benefits plan. Others will require that you submit an itemized receipt
- Itemized receipts must provide the vendor's name and address, the item or service purchased, the date of purchase, and the amount paid

Accounts

A debit card may be linked to the following accounts

- Flexible Spending Account (FSA)
- Limited Purpose Flexible Spending Account (LPFSA)
- Dependent Care Assistance Plan (DCAP)
- Health Reimbursement Arrangement (HRA)
- Qualified Small Employer Health Reimbursement Arrangement (QSEHRA)
- Health Savings Account (HSA)
- Transit/Parking Benefit Account

Depending on your plan, multiple benefit accounts may be accessed using the same debit card (for example, FSA and DCAP).



DataPath 
Administrative Services

Customer Service
Toll-Free 877-685-0655 or
Local (501) 687-6954
benefits@datapathadmin.com
www.datapathadmin.com
1601 Westpark Drive, Suite 6
Little Rock, AR 72204





CC FEATURED EPISODE: CLAIMS CONUNDRUM



For more Adventures of Captain Contributor, and to learn how you can make the most of your hard earned dollars, ask your third party administrator about **FSA's, HRA's, HSAs, and Transit accounts.**

Visit **captaincontributor.com** for more adventures, or follow him on social media:



-  @captcontributor
-  captaincontributor
-  facebook.com/captaincontributor
-  linkedin.com/in/captain-contributor

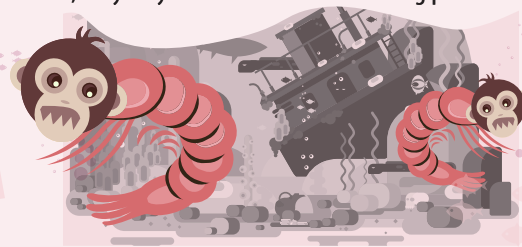
SEA-PRIMATES

It's the real live primate you grow yourself

It's ABSOLUTELY AMAZING! Just add water to the tank, toss in the Sea-Primate eggs, and watch as baby primates hatch before your eyes! They are CUTE, they GROW, they PLAY, but be careful, they may BITE. The least entertaining pet ever!

INCLUDES:

Every Sea-Primate kit includes a leaky jar, feeding spoon, Sea-Primate eggs, Sea-Primate food, bandages, and a manual for training your pet primates.



Learn the art of Hypnosis!

You'll be amazed how easy it is to hypnotize anyone into accepting your suggestions. With the snap of a finger, astonish your friends with stunts of hypnotic wonder at YOUR EVERY command!



YOU'LL BE AMAZED!



X-RAY SPECS

Put them on and reveal what's hidden!
See through clothes, skin, walls, and MORE!

GIANT ANT FARM



This wall-sized GIANT ANT FARM will be the toast of your town! Watch the little giants dig their tunnels, it's miles of fun!

PROJECTING DECODER RING

Decode your own secret messages as they are projected onto any surface with this amazing **Projector Decoder Ring!** Simply point and shoot and you'll be decrypting codes in no time!



EASY to use

TRIVIA

A benefits debit card may be linked to which type of account:

- A. FSA
- B. HSA
- C. Transit/Commuter
- D. College savings account

Answer: A, B, and C

THANKS FOR READING!

This comic book is provided by your third party administrator in conjunction with DataPath, Inc. It may not be reproduced for any reason without express written consent.

DataPath 

© Copyright 2017
DataPath, Inc. | dpath.com
v073117



Order your very own carnivorous plant! It's a natural deterrent to pests, and a great conversation piece. **You'll be entertained for several seconds!**

None of this is actually for sale. Surely you realize it's simply for entertainment purposes.

DataPath 
Administrative Services

Customer Service

Toll-Free 877-685-0655 or
Local (501) 687-6954
benefits@datapathadmin.com
www.datapathadmin.com
1601 Westpark Drive, Suite 6
Little Rock, AR 72204